



Haiti Administrative Structure and Proposed Integrated Telemedicine Mental Health System

Richard Douyon, M.D., FAPA

Rebati Santé Mentale, Inc./www.Rebati.org

Director of Hospital Operations, Miami VA Healthcare System
Associate Professor of Psychiatry, Department of Psychiatry,
University of Miami Miller School of Medicine at Miami VAMC

Health Care Indicators for 10 million Haitians

- Beudet Psychiatric Hospital near the Capital (150 long term care beds) was destroyed by the earthquake
- Mars & Kline Psychiatric Center in Capital (60 acute care beds) was destroyed by the earthquake
- 15 psychiatrists
- 1,949 PCP's & pediatricians
- Less than 1,800 trained RN'S
- Less than 200 psychologists
- Less than 200 Social Workers
- Less than 1,500 teachers for 2 million school age children



A photograph of a street in Haiti after a disaster, showing rubble, damaged buildings, and people. The scene is one of devastation, with debris scattered across the road and buildings that have been severely damaged or partially collapsed. In the foreground, a woman wearing a blue headscarf and a light-colored shirt stands looking towards the right. To her right, a white pickup truck is parked, and a man in a white shirt is standing next to it. In the background, a man is visible working amidst the rubble. The overall atmosphere is one of hardship and the aftermath of a major event.

THE HAITIAN MENTAL HEALTH SUMMIT

Marie-Claude Rigaud, MD, MPH

Distinguished Life Fellow, APA

2011 AMHE CONVENTION

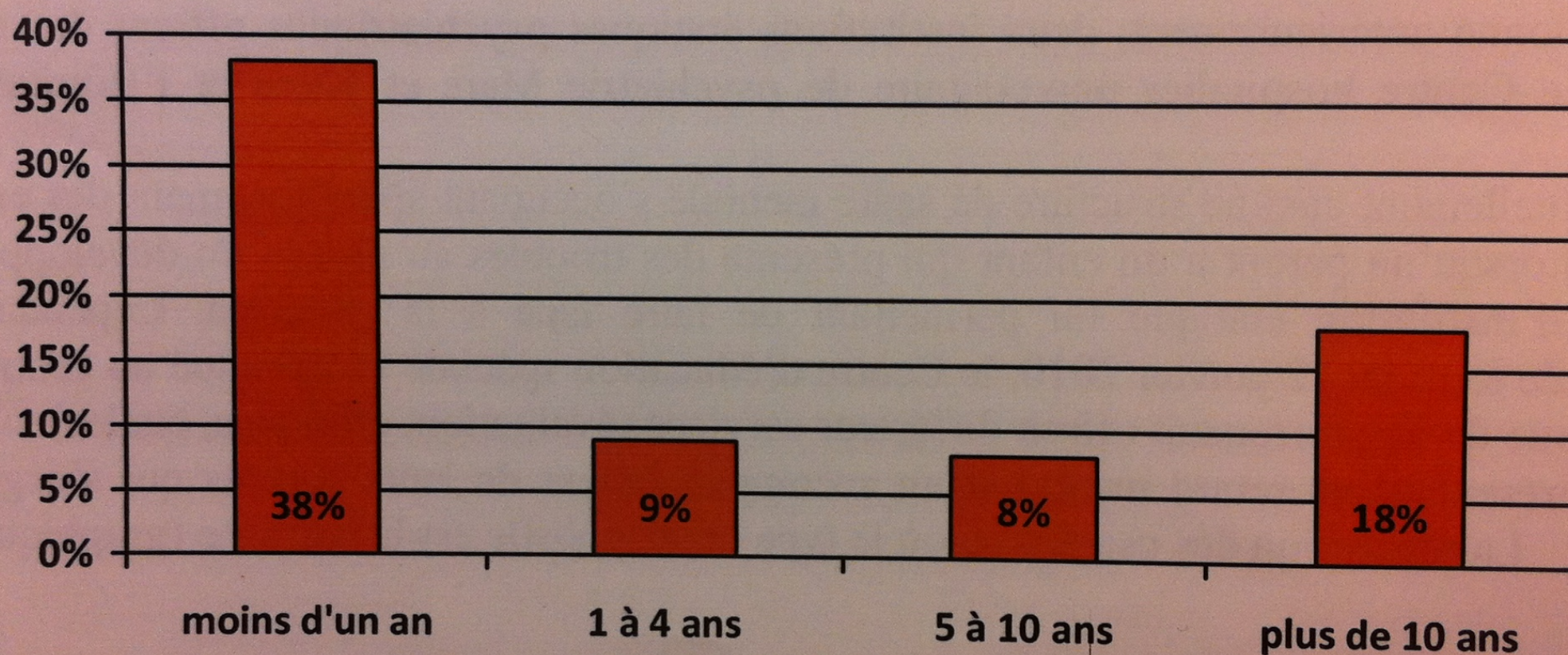
Psychiatric Referral Sources for Mars & Kline
Psychiatric Center which was destroyed (the only
acute psychiatric facility for 10 million people)



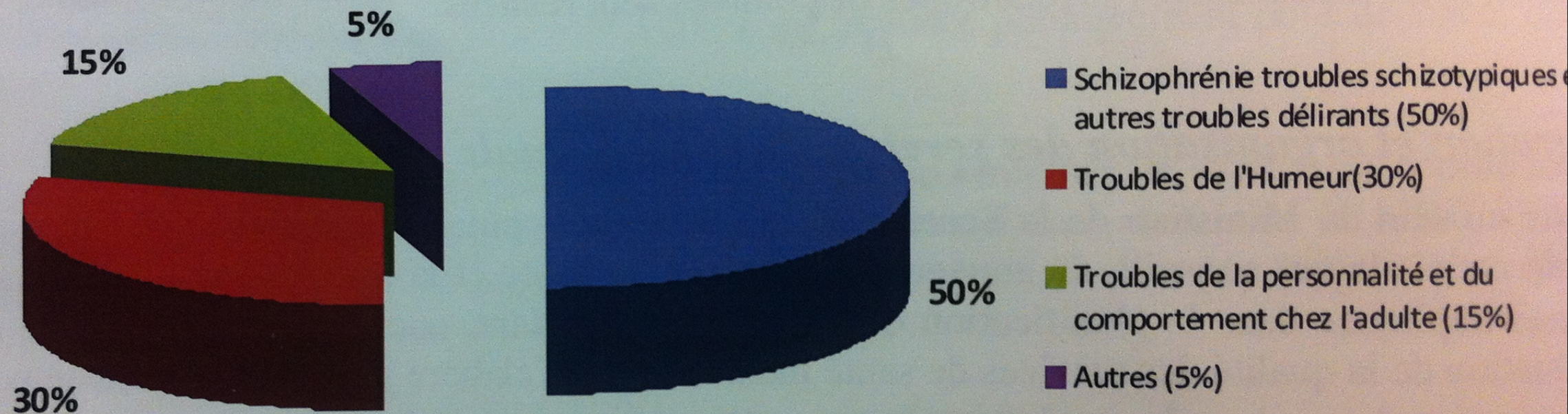
Mars & Kline Courtyard



Graphique 2 : Présentation de la durée de séjour à l'Hôpital Défilée de Beudet et au CHUP/MK.



Graphique 1 : Répartition des usagers selon le type de diagnostic (Hôpital Défilée d'Beudet)



Nous observons que 38% des patients restent moins d'un an dans les hôpitaux psychiatriques tandis que 18% des patients sont hospitalisés depuis plus de 10 ans (graphique 2).

DOMAINE 4: RESSOURCES HUMAINES

Ce domaine représente l'effectif de personnel disponible dans les structures de santé mentale publique et privé. Il fait part de l'existence d'association d'usagers, d'activités entreprises par les associations de patients, de parents ou d'autres ONGs.

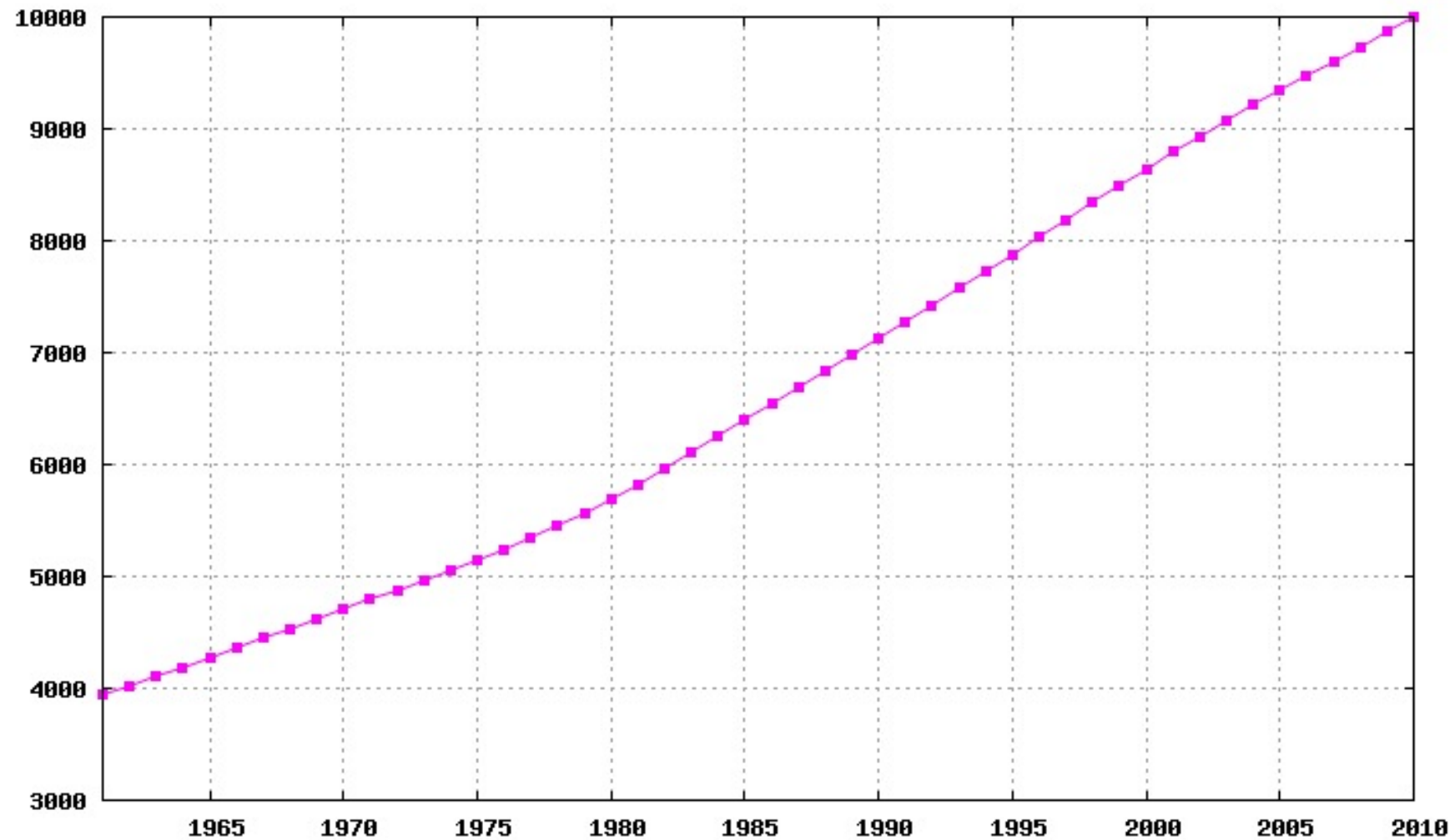
Distribution des ressources humaines en santé mentale

Les ressources humaines œuvrant dans les structures de soins de santé mentale publiques et privées sont en nombre limité.

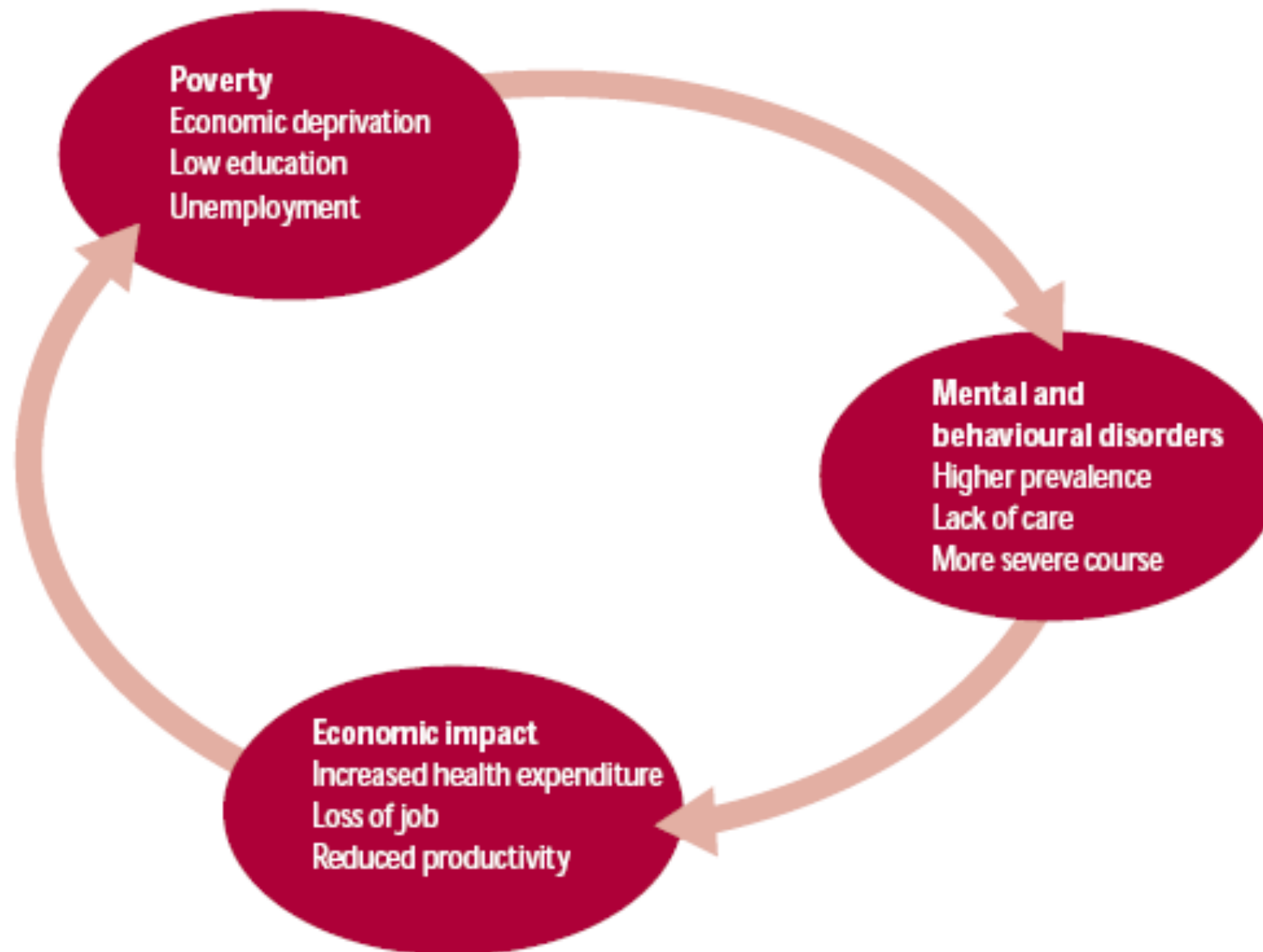
Tableau 1 : Effectif des professionnels intervenant en santé mentale

SPECIALITÉS	EFFECTIFS	% par 100.000 HABITANTS
Médecins psychiatres	27	0,28 par 100.000 Habitants
Médecins généralistes	14	0.14 par 100.000 habitants
Infirmières	36	0.38 par 100.000 habitants
Psychologues	194	2 par 100.000 habitants
Travailleurs sociaux	82	0.86 par 100.000 habitants
Ergothérapeutes	1	
Neurologue	1	

Haitian Population Growth Tripled in 50 years

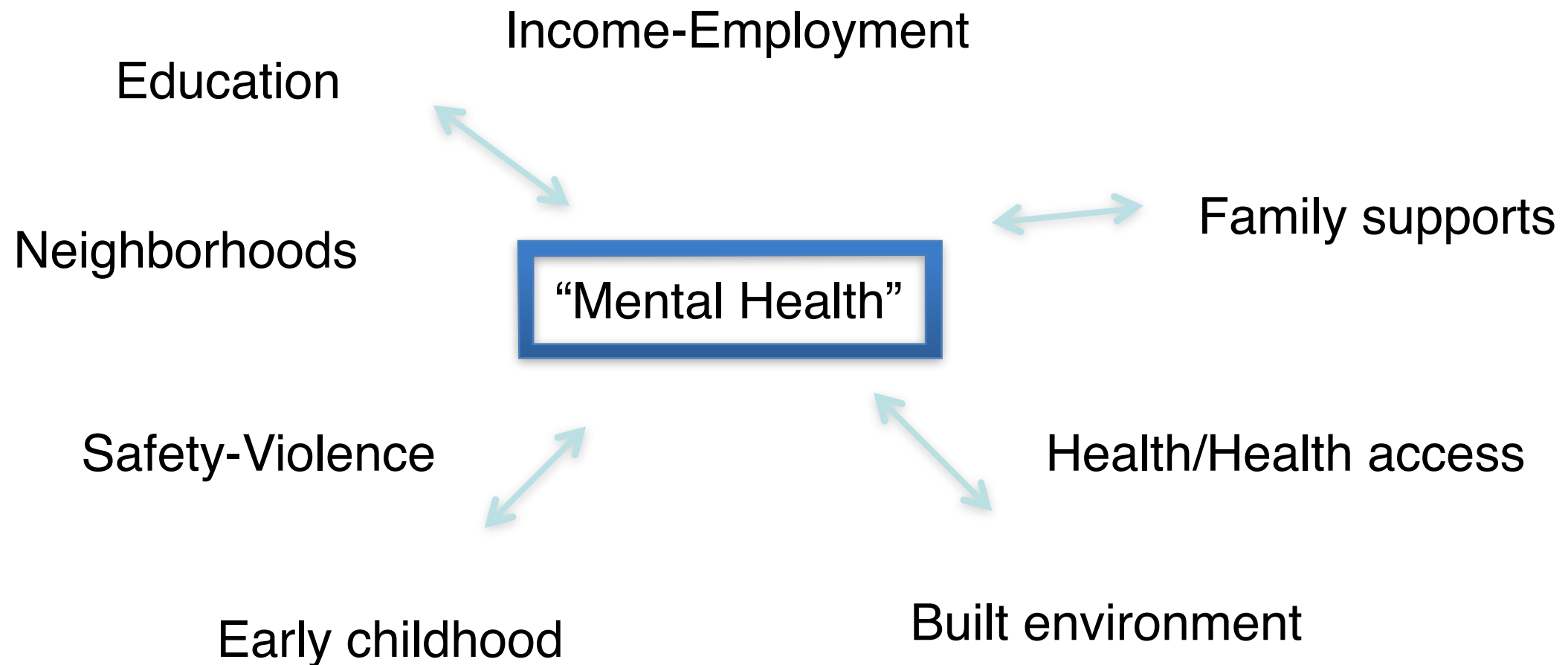


The Vicious Cycle of Social Challenges and Mental Conditions



Mental health- Burden but also critical mediator

Think innovatively about structure: Deliver care in ways that follow the causal paths



How can this be done?

- Focus on a roadmap for *systematic* implementation and quality oversight and sustainable, scalable, *capacities*: think-structures, skillsets, and care *pathways*; not specific treatments, institutions, or diseases
- Lead, evaluate, and discipline, NGOs
- Make implementation strategy and associated benchmarks clear, and the key role of the Government of Haiti to establish
- These things are possible, affordable, available, and proven for mental health

How?

Adhere to 2 guiding tasks:

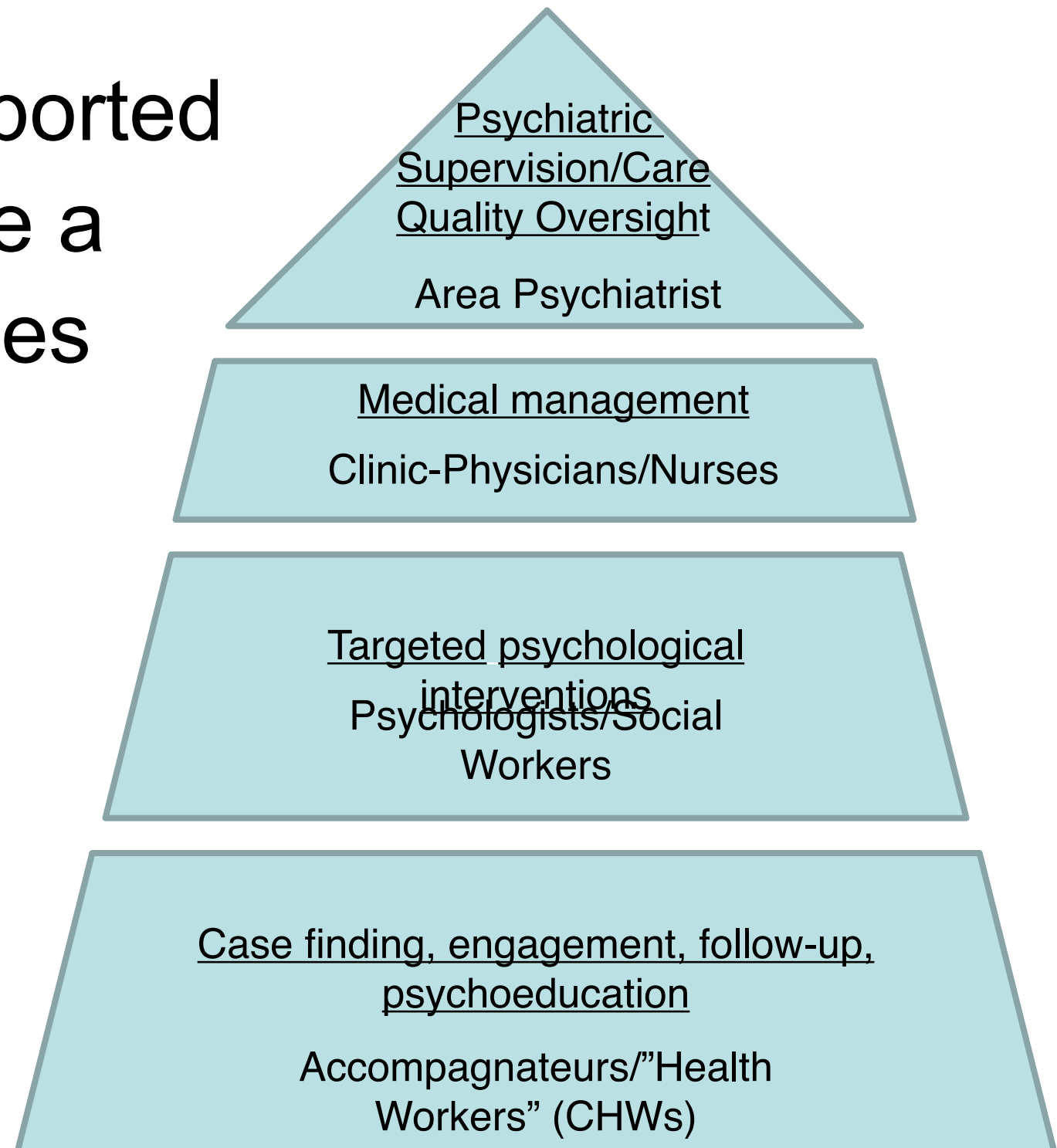
- Get the skill-sets right- Establish a core “Pyramid of Care” as a flexible foundation for multiple care pathways and to coordinate large-scale implementation
- Follow 4 “Implementation Rules”

Implementation Rules

- Assess (and engage) context first
- Identify priority care pathways (and map them across “pyramid” skill packages and appropriately matched human resources)
- Specify decision support tools, supervision, and triage rules
- Use quality improvement practices

Skill Set “Packages”

A few evidence supported skill sets can provide a foundation that carries a range of care pathways to span needed range of action



CUBA

74

73

72

Haiti

- International boundary
- - - Department boundary
- ★ National capital
- ⊙ Department capital
- +—+— Railroad
- Road

0 10 20 30 40 Kilometers
0 10 20 30 40 Miles



Haiti Departments (10)



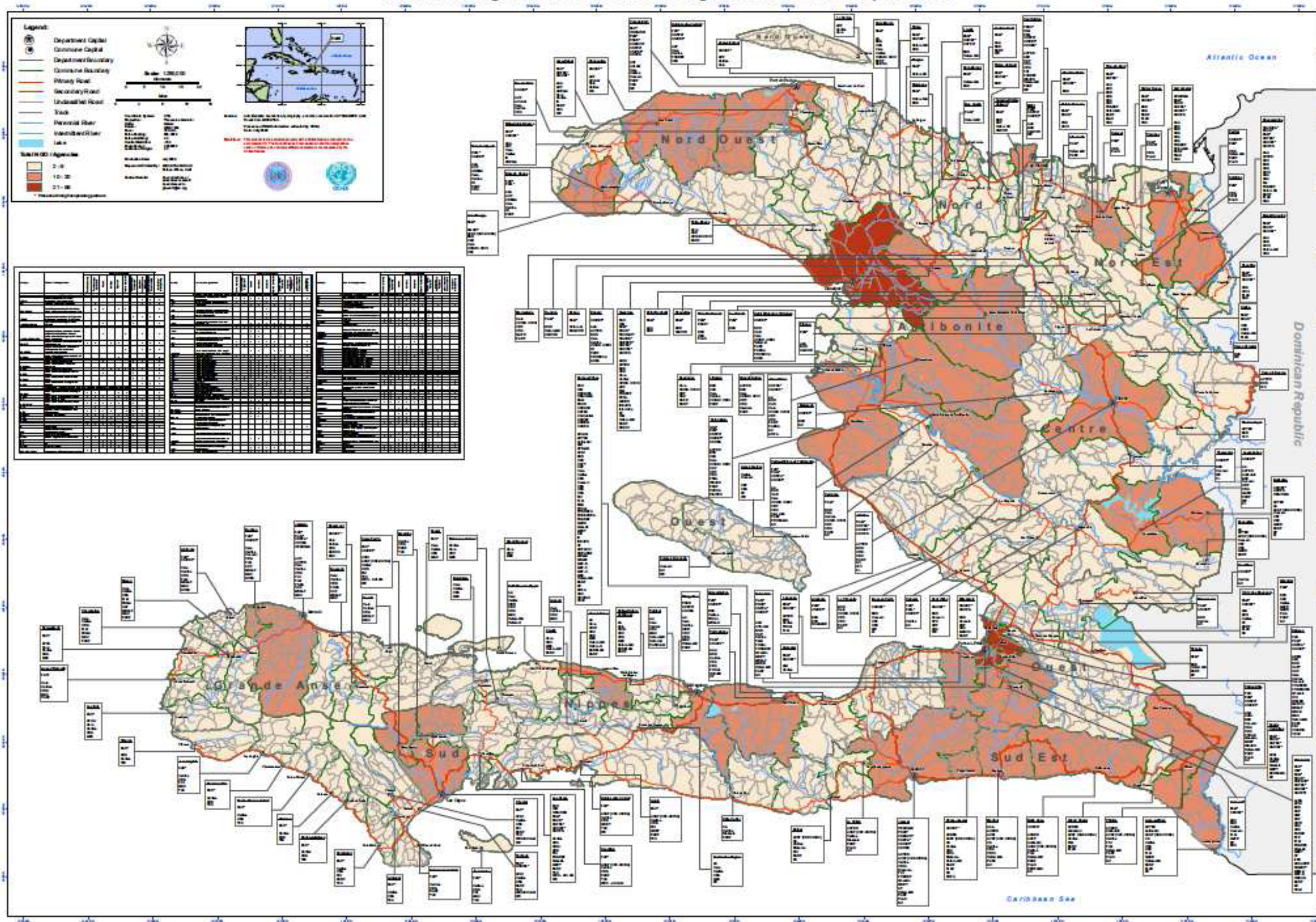
Haiti Arrondissements (42)



Haiti Communes (140)



HAITI: UN Agencies, International Organizations & NGOs presence

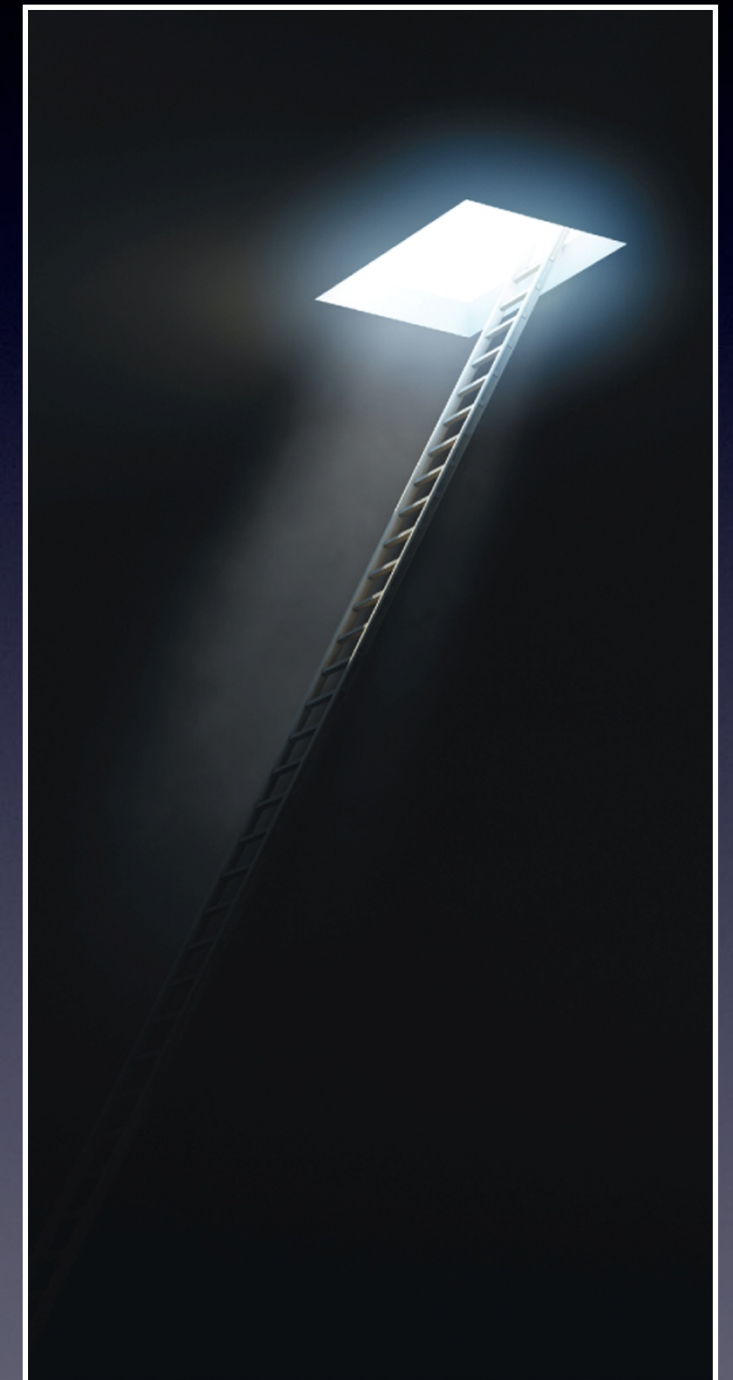


Urgent and Critical Health Care Needs for Haiti

- Largest University General Hospital in the country (700 beds) was destroyed. It will take 2 years to rebuild and will cost at least \$60 million USD.
- Lack of Mental Health care (the only 2 psychiatric hospitals of the country were destroyed). No funds and no plan are set aside to rebuild them yet.
- Lack of Cardiac and Cardiovascular care
- Lack of Cancer care
- Lack of Neurosurgical and trauma care
- Lack of Stroke Units
- Lack of Rehabilitation care for 100,000's amputees and trauma victims after the earthquake
- Lack of Biomedical Research

The Solution: Telemedicine

- Build a modern Telemedicine system to link the medical facilities into a network to deliver care and provide training and supervision to primary care providers and healthcare workers
- Set up a Central Call Center for scheduling and coordination of care. The call center will be managed by the creole speaking operators at Switchboard of Miami.
- Establish a Crisis Hotline for crisis interventions and mapping of providers and existing services
- Consultations and training will be provided by a network of Haitian American and Canadian providers
- Telemedicine Project will be implemented through the US Humanitarian Assistance Program (HAP)





HUMANITARIAN ASSISTANCE PROGRAM (HAP)



TO IMPROVE THE LIVES OF THE HAITIAN PEOPLE

- EOC- 10
- DRW - 10
- Schools - 8
- Fire Stations - 14
- Community Centers - 8
- Water well Projects - 8
- Clinics - 6



SCHOOL IN POND GAUDIN



MEDICAL CLINIC LES CAYES

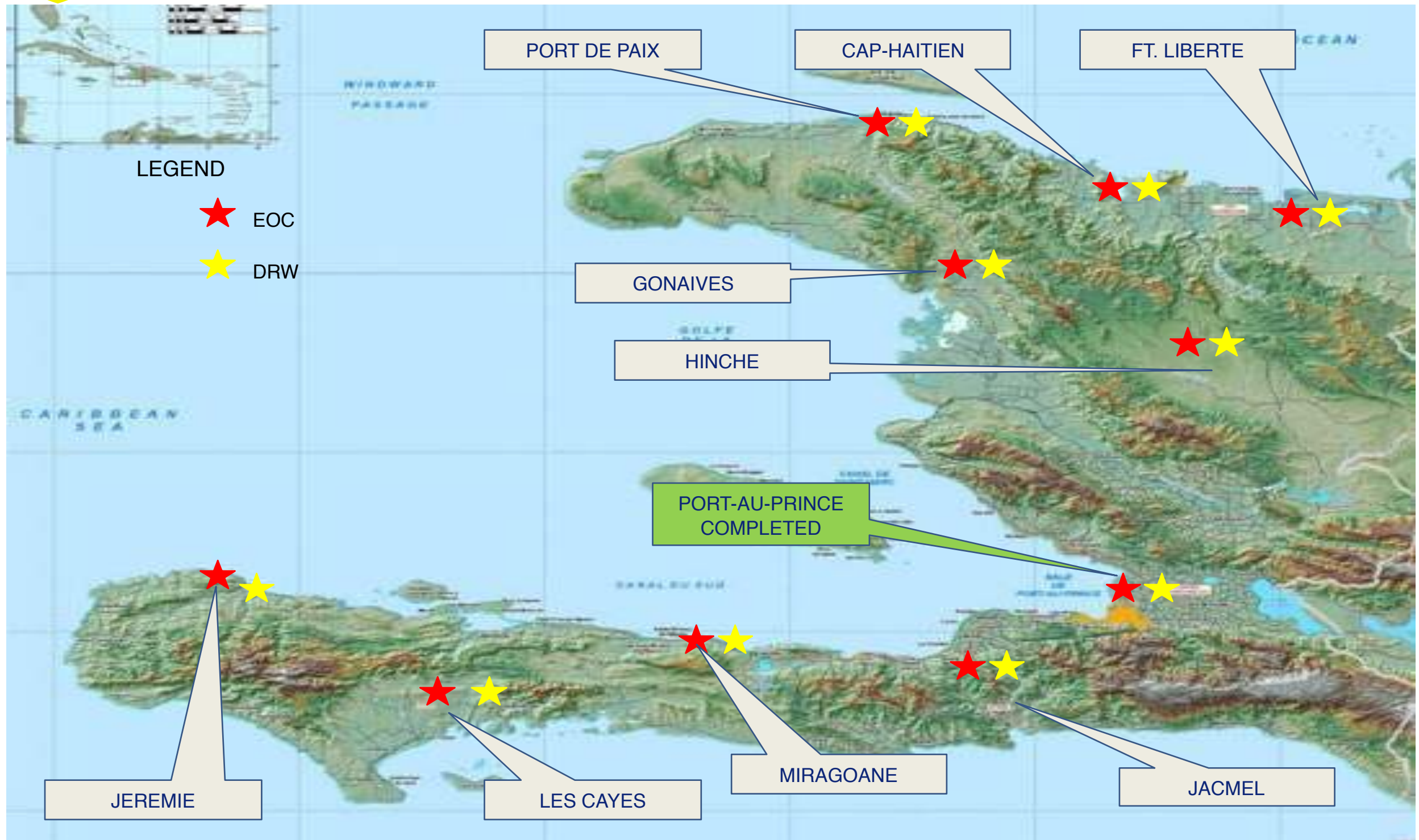


COMMUNITY CENTER IN HATTE/DESDUNES





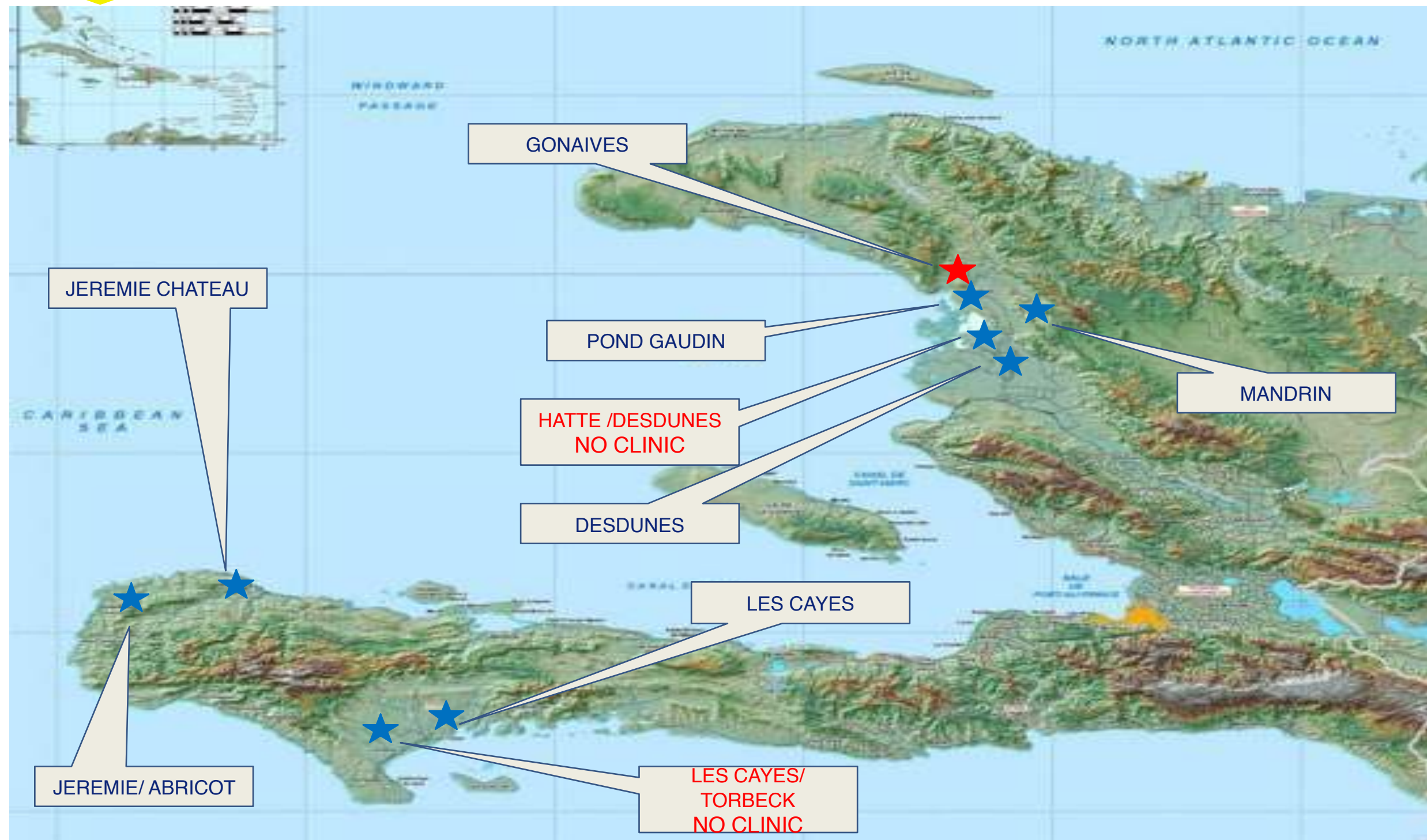
EMERGENCY OPERATION CENTER (EOC) & WAREHOUSES



10 EOCs \$6,172,774.88 10 DRWs \$6,101,300.09 **TOTAL \$12,274,074**



COMMUNITY CLUSTERS



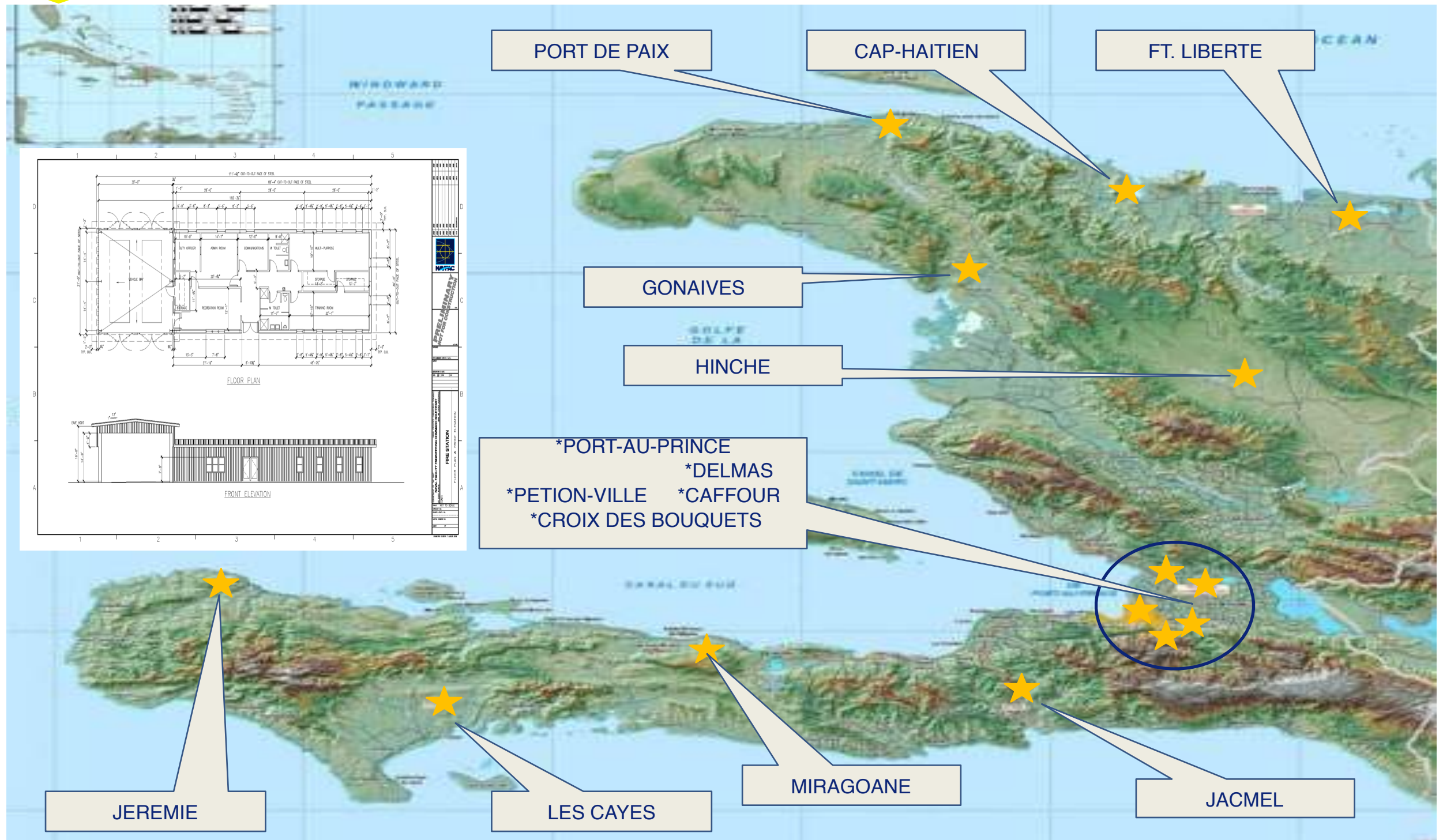
6 CLINICS \$2,785,874.94
8 COMMUNITY CENTERS

8 SCHOOLS \$4,432,945.85
4,096,920.18 **TOTAL \$12,973,297**

8 LATRINES/WELLS 1,657,556.52



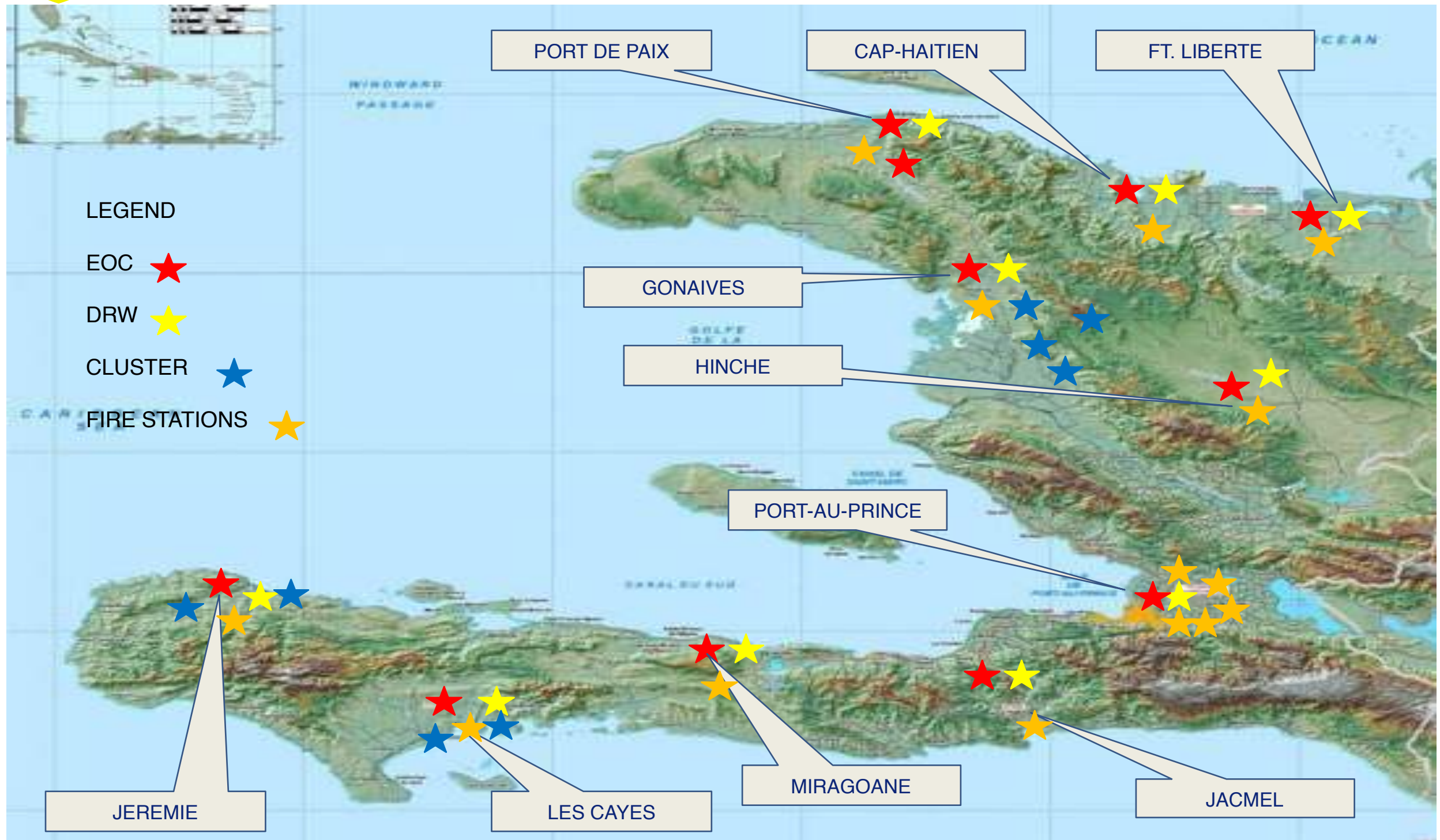
14 FIRE STATIONS/ EMERGENCY MEDICAL SERVICES (EMS)



14 FIRE STATIONS \$8,99,135.24



HAP CONSTRUCTION SUMMARY & LOCATION



OVERALL CONSTRUCTION PROJECTS **TOTAL \$34,246,507**



TRAINING

FIRE/EMS STATION DEVELOPMENT

INTERNATIONAL CITY /COUNTY MANAGEMENT ASSET (ICMA)

- Develop organizational framework & SOP
- Develop instruction for basic firefighting
- Incident response & Emergency Medical Services (EMS)
- **ASSESSMENT COMPLETED**

JON BOATS TRAINING

89 BOAT OPERATORS TRAINED

COLLABORATION WITH INTERNATIONAL MANAGEMENT GROUP (IMG), DIRECTION OF PROTECTION CIVILE (DPC), MILITARY LIAISON OFFICE (MLO)



DONATIONS



- 14 Containers cleared custom & delivered to DPC.
- 4 Containers clinic equipment for Les Cayes & Torbeck.
- 21,000 Handheld crank radio delivered to DPC.
- School equipment will be bought by International Development Bank (IDB)



COMPLETION DATES & CONCERNS



30TH October 2012 EOC/DRW, CLUSTERS, FIRE STATION
EOC/DRW

- Cap-Haitien, Les Cayes, Gonaives, Jeremie/ Chateau, Port-de-Paix, Jacmel, & Ft. Liberte will be ready

Clusters

- Hatte, Desdunes, Chateau, Abricot

Fire stations

- Port-de- Paix, Cap-Haitien, & Fort Liberte

Area of Concerns

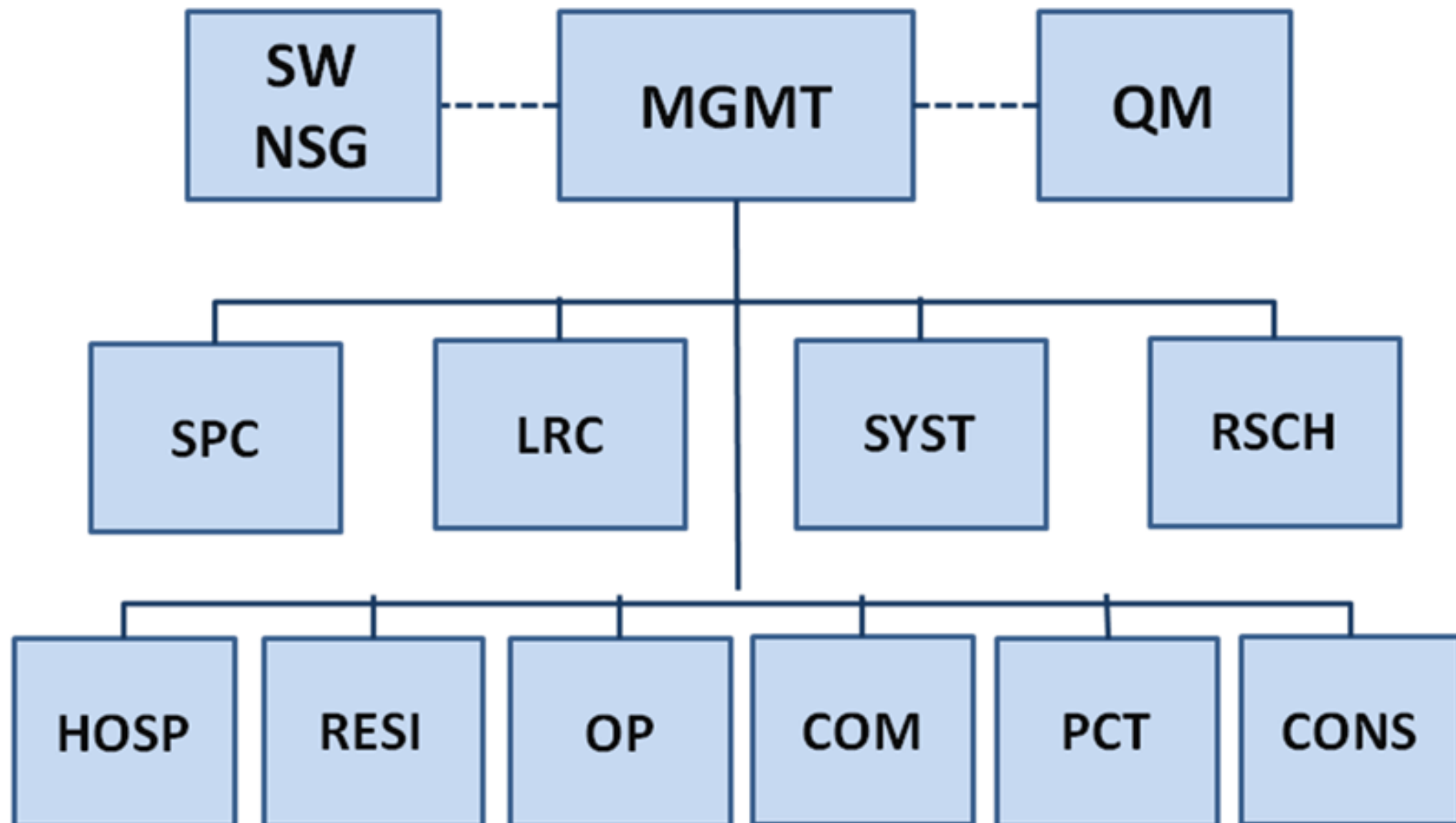
- Security, Electricity, Maintenance, Personnel for the EOC/ DRW
-

Proposed Haiti Mental Health Infrastructure

- Mars & Kline Psychiatric Center (60 beds) for acute and intermediate care (\$3-6 M)
- Beudet Psychiatric Hospital (120 beds) for long-term care and rehab (\$6-12 M)
- Neurosciences and Psychiatric Institute (60 beds) for acute and intensive care of Psychiatric, Neurological and Neurosurgical conditions (\$3-6 M)
- Psychiatric Units (20 beds) in each of 9 other departments for acute and intermediate care (\$1 M each for \$9 M total)
- Psychiatric Units (5 beds) in each of 42 arrondissements or counties for acute stabilization (\$0.25 M each for \$10.5 M total)
- Pyramid of cares for mobile clinics (each per county for 42 total) to cover all 140 districts or communes (staffed with 1 to 2000 healthcare workers or case managers per pyramid of care with salaries of \$1000/month). Estimates of 42 to 84,000 new jobs.
- Telemedicine Healthcare Network supported by a central Call Center and Crisis Hotline for scheduling, crisis interventions and mapping of providers and services

Haiti Mental Health System (proposed)

The MHBS Programs



Proposed 14,000 Professional Staff

- Management boards (10) with chief psychiatrist, psychologist, nursing, social work and administrator.
- Total of 100 psychiatrists for 10 departments (10 per Dept) with salaries of \$5000/month.
- Total of 600 psychiatric nurses for 6 per psychiatrists (60 per Dept) with salaries of \$2,500/month.
- Total of 1200 LPN for 2 per RN (120 per Dept) with salaries of \$1,500/month
- Total of 1000 psychologists (1 per 200 preschoolers) with salaries of \$3,500/month
- Total of 1000 social workers (1 per 200 families) with salaries of \$3,000/month
- Total of 10,000 teachers (1 per 20 preschoolers) with salaries of \$2,000/month
- Allied professional like pediatricians, OBGYN, nutritionists

Haiti is too Small to fail: Budget, Jobs and Funding Sources for a self sustainable mental health system

- Infrastructure and construction costs: \$32-44 M for (creation of thousands of construction jobs)
- Training of professional staff \$100/month (\$0.5 M/month i.e., \$6 M/year) for 5 years
- Training of teachers \$50/month (\$0.5 M/month i.e., \$6 M/year) for 5 years
- Training of case managers \$10/month i.e., (\$420-840,000/month i.e., \$5-10 M/year) for 5 years
- Professional salaries per month: \$30 M (\$360 M per year). These employees will contribute to the Haitian treasury by paying taxes.
- Healthcare workers salaries per month: \$42 M to 84 M (\$420 to 840 M per year). These employees will contribute to the Haitian treasury in taxes.
- Create a tax for the children defense fund
- Create a health insurance of \$10/month premium per child
- As MINUSTAH is phasing out part of the funds from their budget (\$1 billion/y) may be secured to help pay the training and salaries of the professional staff for the next 5 years and renewable every 5 years.
- Sliding scales of payments schedules for family who can afford to pay for care and education.

Summit Planning Committee and the Main Sponsors



Haitian Mental Health Summit Participants at the University of Miami, June 26-27 2010



Rebâti Santé Mental, Inc. Board

